

# aerofresh

60 HRV

In Sync with healthier  
indoor air quality



The **Aerofresh 60** now with humidity sensor utilises an innovative ceramic core heat exchanger that delivers up to 82% heat recovery. Two synchronised units alternate between exhaust and supply air flow to help maintain healthy indoor air quality, and prevent condensation and mould growth.



**FANTECH**  
Intelligent Ventilation

# Fresh air through continuous ventilation

The Aerofresh 60 decentralised energy recovery unit provides continuous ventilation to ensure a home feels fresh and comfortable to live in. Home occupants can enjoy a healthier indoor environment as the Aerofresh will improve the air quality, while being energy efficient to run and very simple to operate.

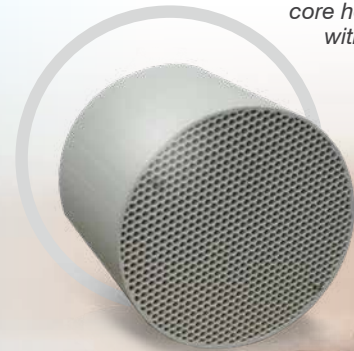
Aerofresh 60 units are installed in synchronised pairs to provide balanced ventilation (low energy operation) and promote higher levels of air circulation within the home compared to single point systems.

## Helps reduce air contaminants & energy costs

Outside air coming in through windows and doors can be a major contributor to a home's heating and cooling costs. An Aerofresh 60 decentralised ventilation system can considerably reduce these energy costs by transferring up to 82% of the thermal energy from the exhaust air to the incoming fresh air. During winter it transfers the heat from the warmer indoor air and in summer the coolth from the colder air.

Natural ventilation through open windows and doors can also have other negative effects, including entry of dust and insects, a reduction in security and exposure to adverse weather conditions. Installation of an Aerofresh energy recovery system avoids these issues, and helps reduce concentrations of contaminants such as CO<sub>2</sub> and VOCs by supplying continuous fresh air.

*Regenerative ceramic core heat exchanger with high thermal efficiency*



European Made



Heat Exchanger



Energy Saver



Quiet Operation



Humidity Sensor



**aerofresh**  
60 HRV

*Aerofresh 60 shown with aluminium weatherproof external hood*



## Features

- Alternating exhaust/supply air flow direction (“push-pull”) ensures good air circulation
- Sleek modern internal diffuser is easily removed for cleaning
- Regenerative ceramic core heat exchanger with high thermal efficiency (up to 82%)
- Integrated humidity control to detect elevated humidity levels and increase fresh air intake accordingly
- Fitted with a high efficiency EC motor that is designed for continuous running and fitted with high quality, sealed for life bearings
- Unique winglet-type impeller provides increased efficiency and low noise
- Telescopic tube makes unit adaptable to wall thicknesses from 300mm to 560mm
- Comes standard with 2 external grilles options; a plastic grille with insect screen and an aluminium weatherproof hood with acoustic lining and insect screen
- LCD remote control to adjust speed, air flow direction, boost, efficiency and free cooling
- Insect screen is easy to remove for cleaning and maintenance from inside the home
- “Free cooling” function allows cool outside night air to enter during summer (night time purge)
- Motor protection IPX4



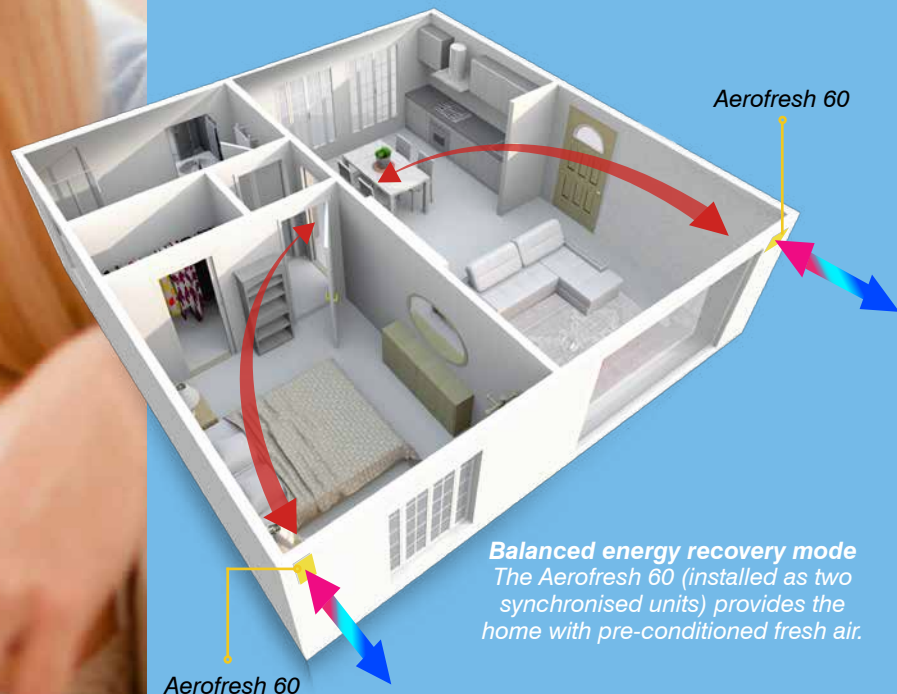
## Aerofresh 60 Remote Control

- Air flow direction (alternating, extract only and intake only)
- Free-cooling mode
- 5 speed options
- Boost function
- Comfort / efficiency mode
- Filters reset



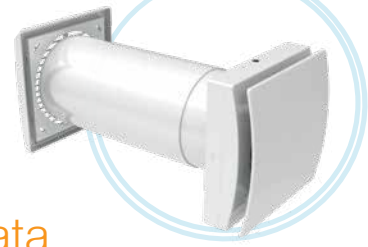
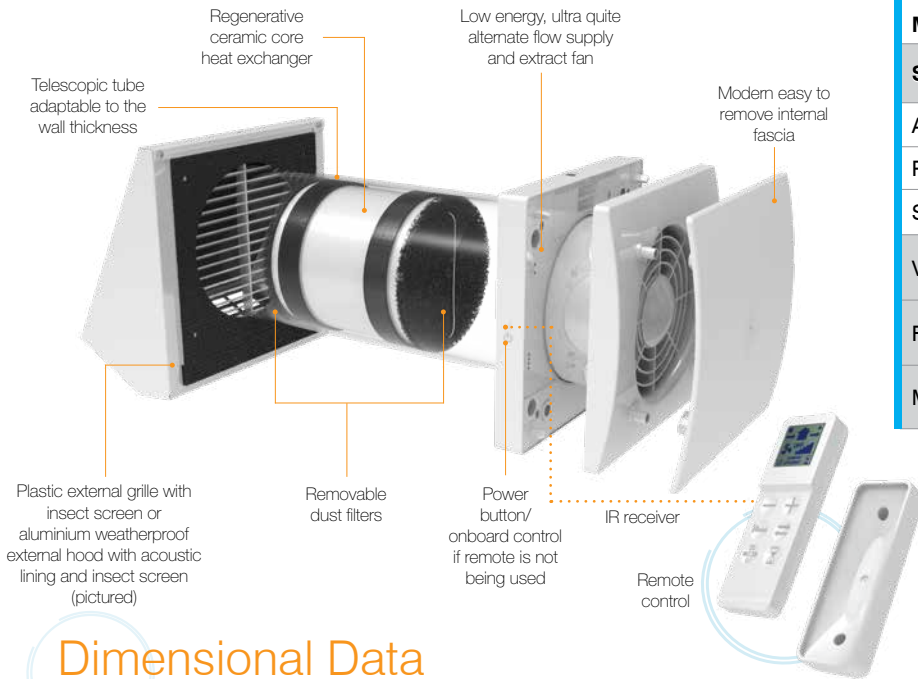
## How it works

- Aerofresh 60 units are installed in pairs in separate rooms
- Both units alternate their air flow direction every 70 seconds (approx.) and are synchronised with each other so while one unit is exhausting air the other is supplying air into the home (diagram below)
- The Aerofresh unit transfers the thermal energy from air inside the building to the incoming fresh air
- The incoming pre-conditioned fresh air reduces the demand for additional heating and cooling
- Helps maintain healthy indoor air as well as prevent condensation and mould growth
- 8 to 10mm door undercut allows air flow when doors are closed
- When installing in a bedroom, ensure to position away from bed heads to avoid uncomfortable air flow and noise concerns.



# Quality Key Components

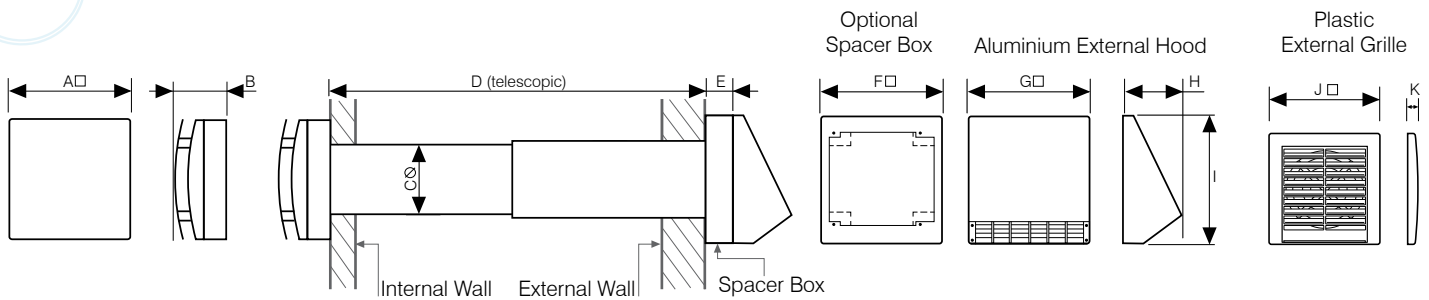
## Quality Key Components



## Technical Data

| Model                  | Aerofresh 60 |    |     |     |    |
|------------------------|--------------|----|-----|-----|----|
| Speed                  | 1            | 2  | 3   | 4   | 5  |
| Air flow (L/s)         | 6            | 8  | 11  | 14  | 17 |
| Power Consumption (W)  | 2            | 2  | 3.5 | 4.5 | 6  |
| Sound Level dB(A) @ 3m | 10           | 14 | 20  | 24  | 29 |
| Voltage                | 220-240 V    |    |     |     |    |
| Frequency              | 50 Hz        |    |     |     |    |
| Max Temperature        | 50 °C        |    |     |     |    |

## Dimensional Data



### Aerofresh 60 Unit

| Model No.     | Description             | A   | B  | C   | D          | G   | H   | I   | J   | K  |
|---------------|-------------------------|-----|----|-----|------------|-----|-----|-----|-----|----|
| AER-60HRV-KIT | Plastic External Grille | 218 | 76 | 158 | 300 to 560 | -   | -   | -   | 218 | 20 |
|               | Aluminium External Hood |     |    |     |            | 250 | 114 | 250 | -   | -  |

Dimensions in mm

### Aerofresh 60 Options

| Code          | Description                                | E   | F   |
|---------------|--|-----|-----|
| AEROSB60      | Spacer to suit 240-299mm thick walls       | 60  | 250 |
| AEROSB190     | Spacer to suit walls less than 240mm thick | 190 | 250 |
| AER-60HRV-REM | Replacement remote control                 | -   | -   |

Dimensions in mm



Scan the QR Code for more information



### Fantech Pty. Ltd.

Victoria: (+61 3) 9554 7845  
 New South Wales: (02) 8811 0400  
 South Australia: (08) 8294 0530  
 Northern Territory: (08) 8947 0447  
 Queensland: (07) 3299 9888  
 Western Australia: (08) 9209 4999  
 A.C.T.: (02) 6280 5511  
 New Zealand: (09) 444 6266

[www.mvhr.co.nz](http://www.mvhr.co.nz)

[www.energyrecovery.com.au](http://www.energyrecovery.com.au)



For sales enquiries contact:

Specifications and design subject to change without notice.

A MEMBER OF ELTA GROUP

FAN0098 09/19